

Best Practice I

TITLE OF THE PRACTICE: Eco-conscious-Campus

Eco-conscious campus is an educational system which not only provides education to the students but also inculcates environmental awareness and promotes conservation of plants and animals in its huge green cover. Being situated in the industrial hub of Himachal Pradesh, it is our prime duty to conserve the resources of the campus and provide students the pollution free environment.

OBJECTIVES OF THE PRACTICE:

We aim to provide an eco-friendly and sustainable environment on the campus.

To provide the students with the most congenial atmosphere that will inspire them to fare well in their life.

To make the environment of the institution more healthy, clean, and green and meanwhile conserving the Flora and Fauna of the green cover of the campus.

THE CONTEXT

The Government Degree College (GDC) Nalagarh is located in Nalagarh city, 46 km from the district headquarters Solan. It has Rupnagar tehsil on the western side, Kurali Tehsil on the south, Kunihar on the east and Tehsil Nupur Bedi on the southern side. The nearby cities to GDC Nalagarh include Baddi, Rupnagar, Bharatgarh and Kurali. The college is 60 kms from Chandigarh, quite close to Punjab and Himachal Pradesh border.

GDC Nalagarh has a lush green beautiful and unmatched campus spreads over 30 acres of land. The whole campus is situated amidst lush green, serene and scenic surroundings of Nalagarh. It also has lush green streets occupied by healthy trees, hedges, shrubs and bushes all around. With over 60 per cent of its area covered with forests, GDC Nalagarh is one among the greenest colleges of Himanchal. With such a large green area under natural conditions, it is home to a variety of wild animals and plants. Peacocks with beautiful long blue and green tail feathers can often be seen in the college campus.

At present Nalagarh is an emerging town for industries as it hosts production units for leather, steel, chemicals, thread mills and breweries. The industrial belt of Baddi-Barotiwala-Nalagarh has made Himachal Pradesh as "Asia's Pharmaceutical Hub". This belt consists of world-wide famous industries and companies such as Ranbaxy, Colgate, L'Oreal, Cadbury, and many more, which act as an economic source to a large number of people of the nation. The waste produced from the industry impacts the environment adversely causing air, water, and soil pollution. GDC Nalagarh is no longer indifferent to it.

THE PRACTICE

The college organizes multiple activities and programmes throughout the year to generate environmental consciousness among the staff, students and general public. These activities are organized with the support of NSS, NCC, Rovers and Rangers, and Eco Club etc. Energy Club, Eco Club, Road Safety Club, Botany and Zoology departments, Exhibitions and Start-ups in the college are platforms to ignite the eco-

consciousness among students. Moreover, beside different eco-friendly clubs, we have College Development and Maintenance Committee, Campus Beautification Committee also. Environmental activities enable students to interact with the environment, understand it and keep them motivated. The tree plantation drives, exhibitions, lectures/seminars, environmental awareness rallies, competitions, camps and many more make students to learn much from the collaborative effort and their indigenous understanding of nature. Besides this,

College celebrates / organizes national and international commemorative days, events and festivals of importance to educate students on issues of concern, to foster harmony, and to celebrate and reinforce achievements of humanity. Seminars, talks, awareness classes, street plays, flash mobs, exhibitions, rallies, pledge taking, competitions, cultural programmes and group discussions are organized on these days to celebrate such important events. World Environment Day, Green day, World Wetland Day and Ozone Day, Van Mahotsava etc. are celebrated to garner empathy, spread awareness and further promote action in the direction that will help improve and maintain the green environment.

Eco-conscious activities conducted:

25/02/2023

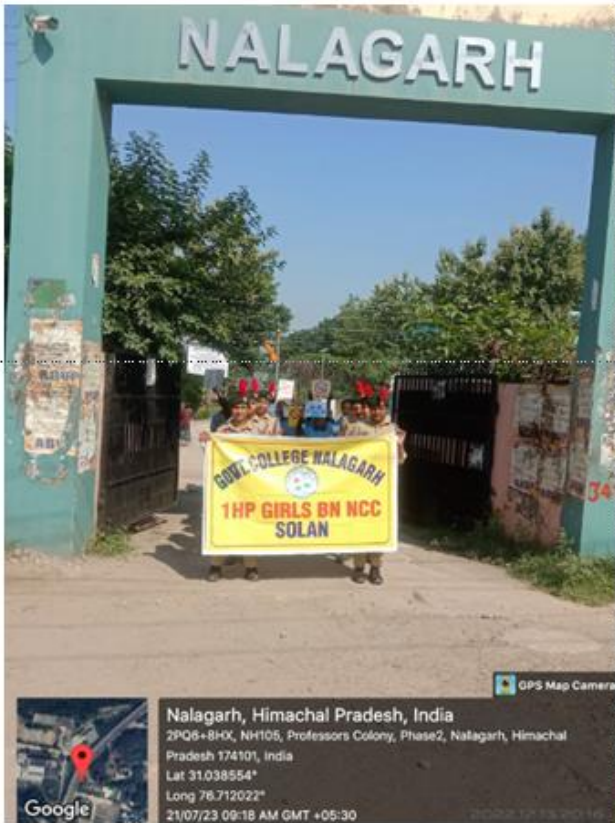








Rally and Tree Plantation
22/07/2023









World Environment Day
05/06/24

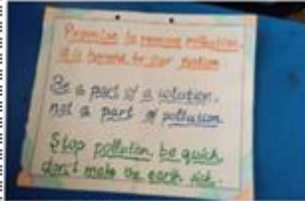


Nalagarh, Himachal Pradesh, India
2PQ6+HCM, Professors Colony, Phase2, Nalagarh, Himachal Pradesh 174101, India
Lat 31.038817°
Long 76.711°
05/06/24 10:22 AM GMT +05:30



Anti-Pollution Drive





कदम-कदम से
प्लास्टिक हटाये.
पूरी धरती को
स्वर्ग बनाए।



BE A PART OF SOLUTION,
BUT NOT OF POLLUTION.
A CLEAN EARTH NEEDS
EVERY ONE'S HELP.
GO GREEN TO BRING OUR
WORLD POLLUTION, LOVE ANIMALS.

